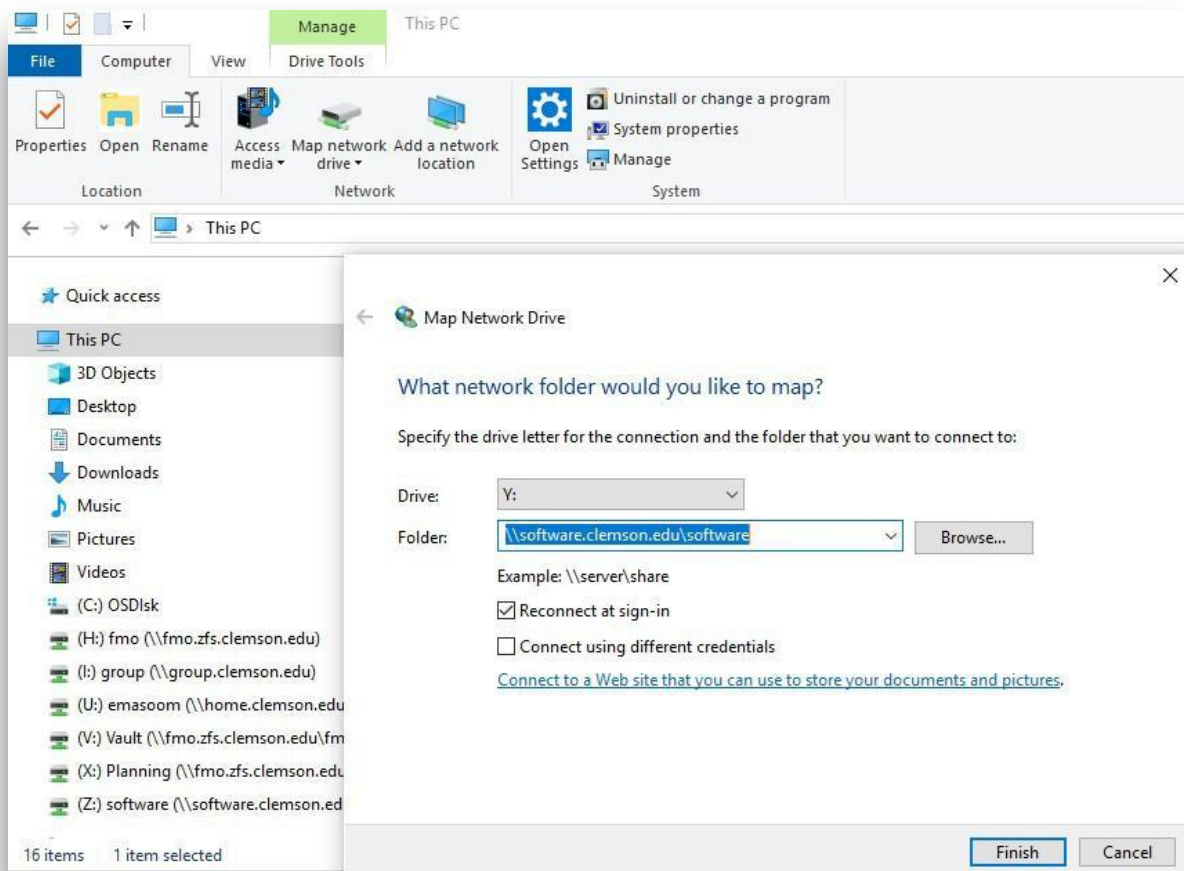


Getting the Software and Installing

ArcGIS Desktop 10.X

1. Connecting to the Software Drive

- 1.1. In order to get the installation software for ArcGIS Desktop, you need to be connected to the Clemson campus network.
- 1.2. Once you are connected to Eduroam, open your file explorer and click on computer in the menu on the left.
- 1.3. After clicking on computer, click [Map Network Drive](#).
- 1.4. In the blank space that says folder to the left of it, type [\\software.clemson.edu\\software](#). The letter chosen in the Drive dropdown menu is arbitrary.

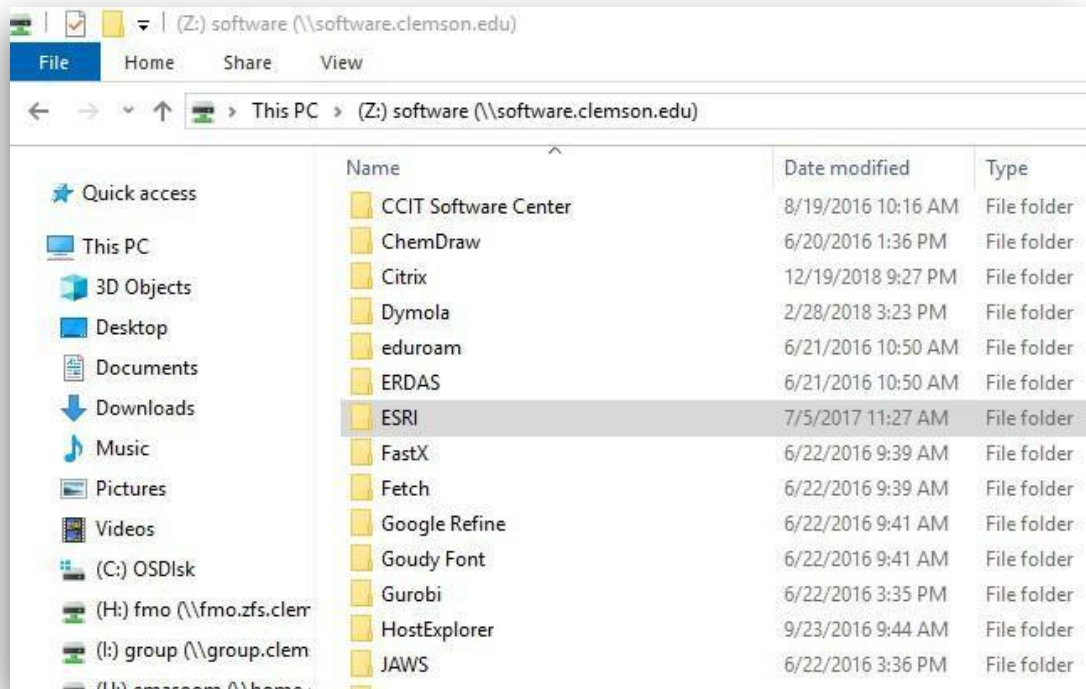


- 1.7. After connecting to the network drive, it should display in your computer window next to your (C:) Drive. It will be labeled *software*(\\software.clemson.edu). Double-click to open the drive.

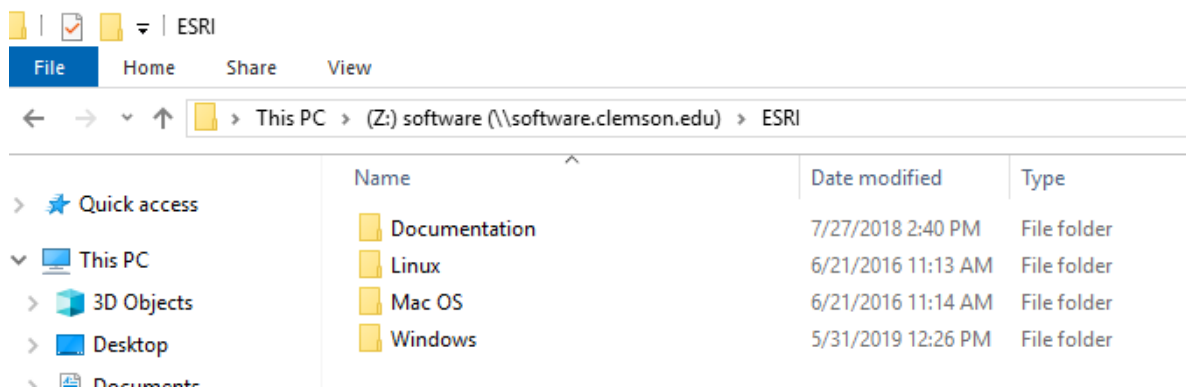
2. Getting the Software installer

2.1. Open the Software folder.

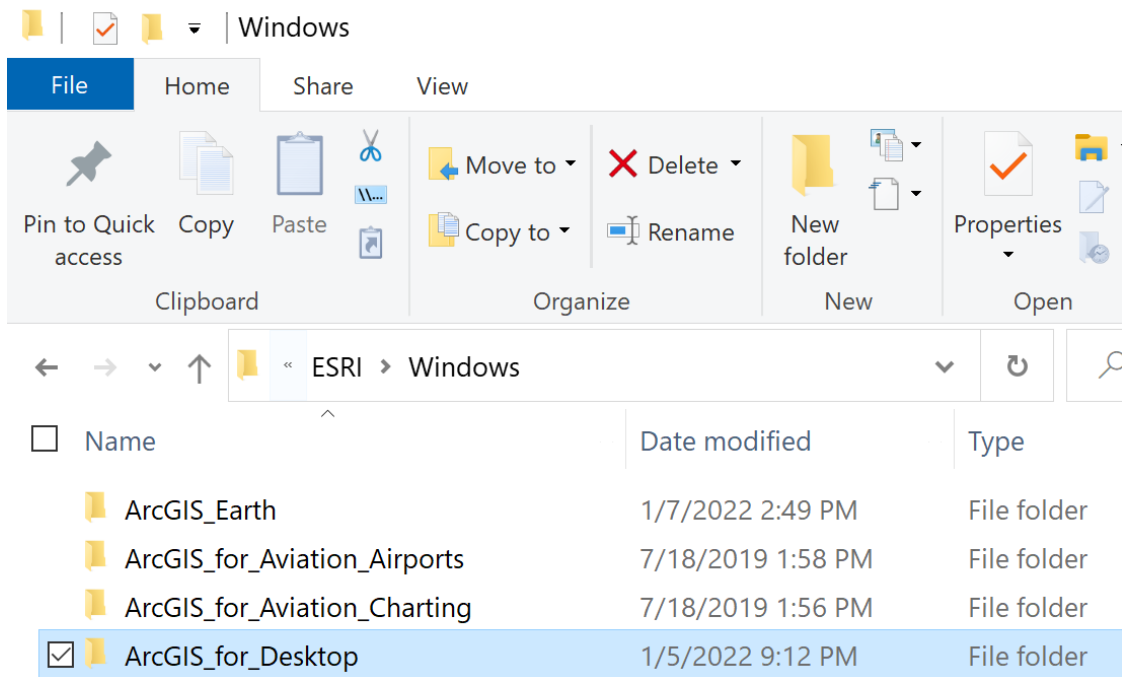
2.2. In the Software folder, scroll until you see a folder labeled [ESRI](#). Open the folder.



2.3. Open the [Windows](#) folder.

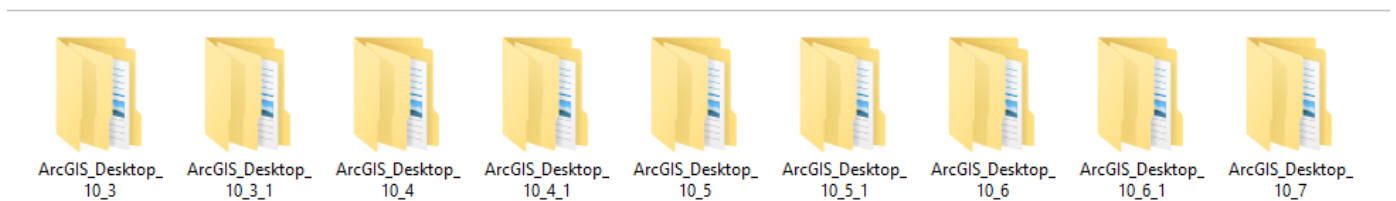


2.4. Open [ArcGIS_for_Desktop](#).

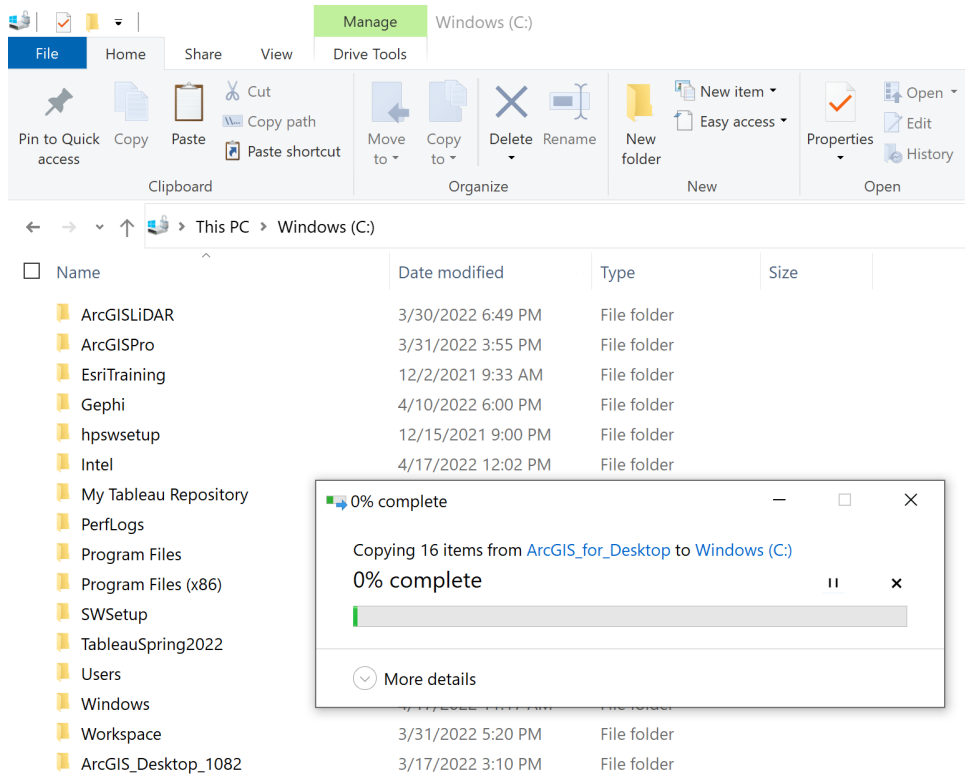


2.5. Select the version of the software as per your need, following are the versions available:

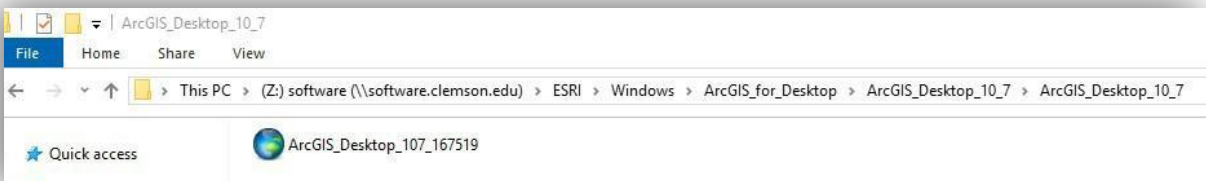
2.6. Let's suppose we are installing [ArcGIS_Desktop_10_X](#)



2.7. Copy the folder on your local drive by right-clicking on the folder, pressing **Copy**, then going to your file explorer and going to your preferred drive location. For this, it is typically recommended to use your C: drive.

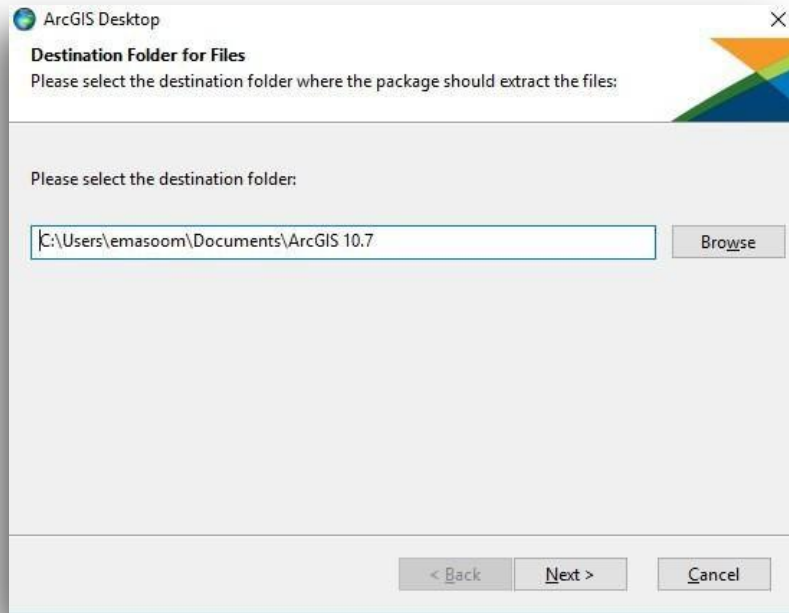


2.8. Go into the new folder, and double click on **ArcGIS_Desktop_107_167519** to run the installer

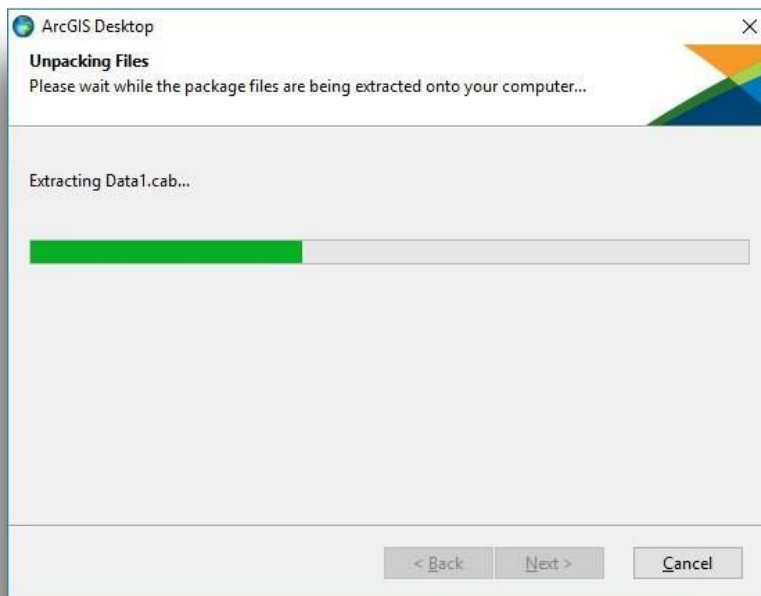


2.9. Click [Run](#).

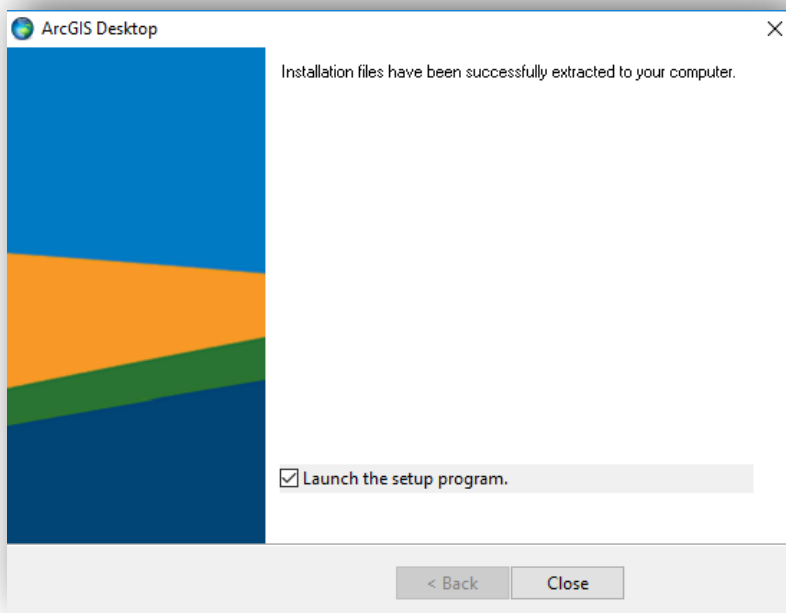
2.10. The destination should already be set for you. If you wish to change the destination folder click Browse. Otherwise click [Next](#)



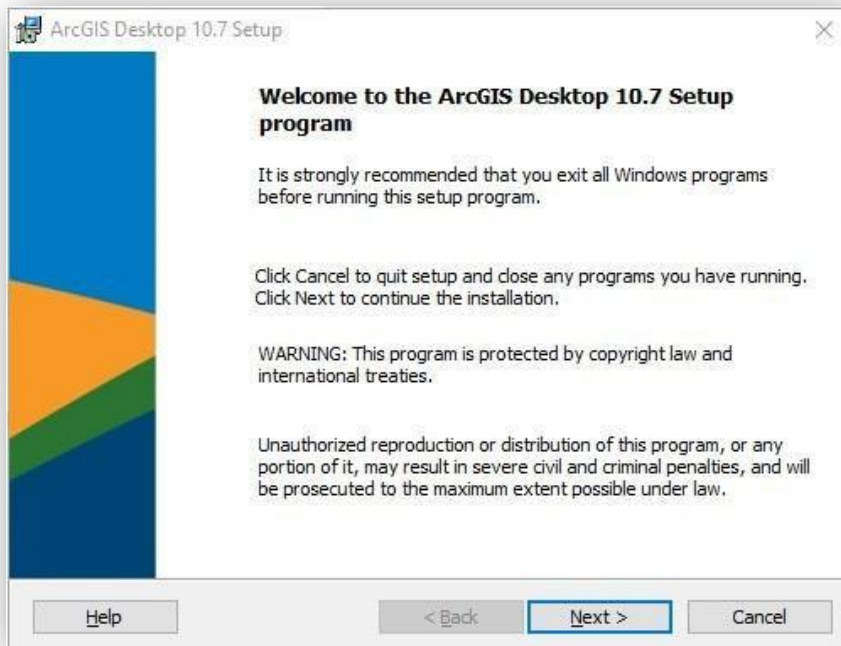
2.11. After the files have been extracted, you will see the Windows Installer and let it run.



2.12. After the installation files have installed successfully, click [Close](#).



2.13. The ArcGIS Desktop setup program should open automatically. Then click [Next](#).

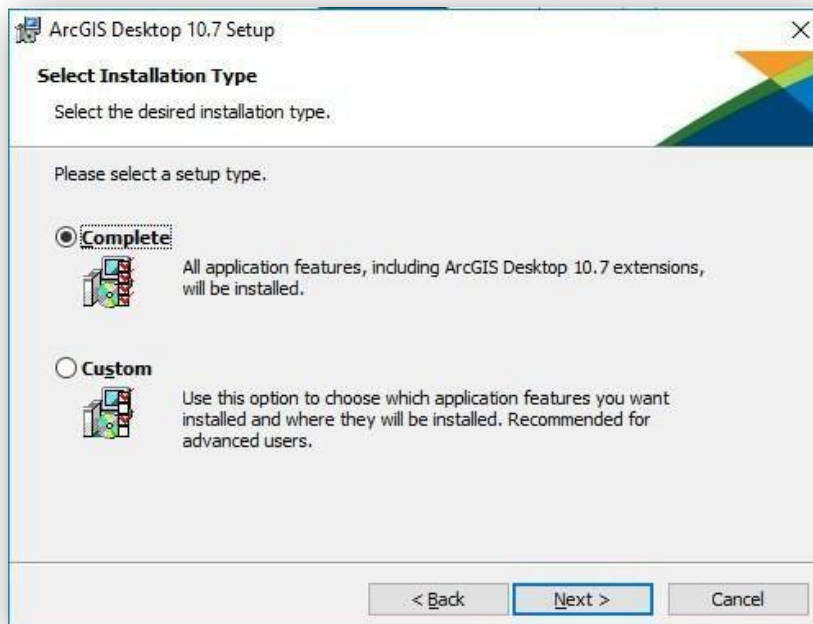


3. Installing ArcGIS 10.X

3.1. Now, click on [I accept the license agreement](#), and click [next](#) again.

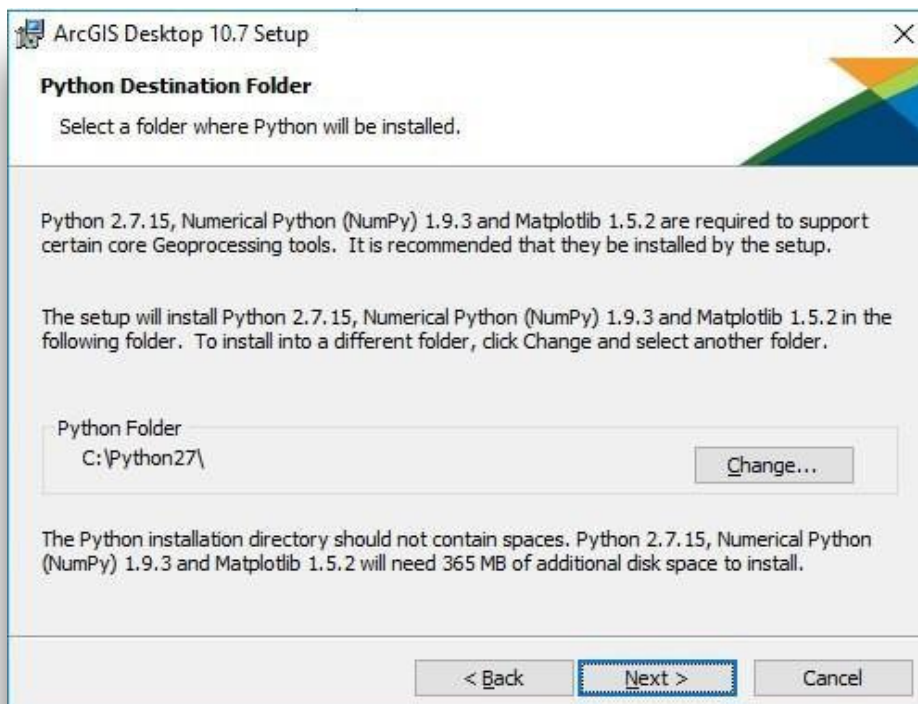
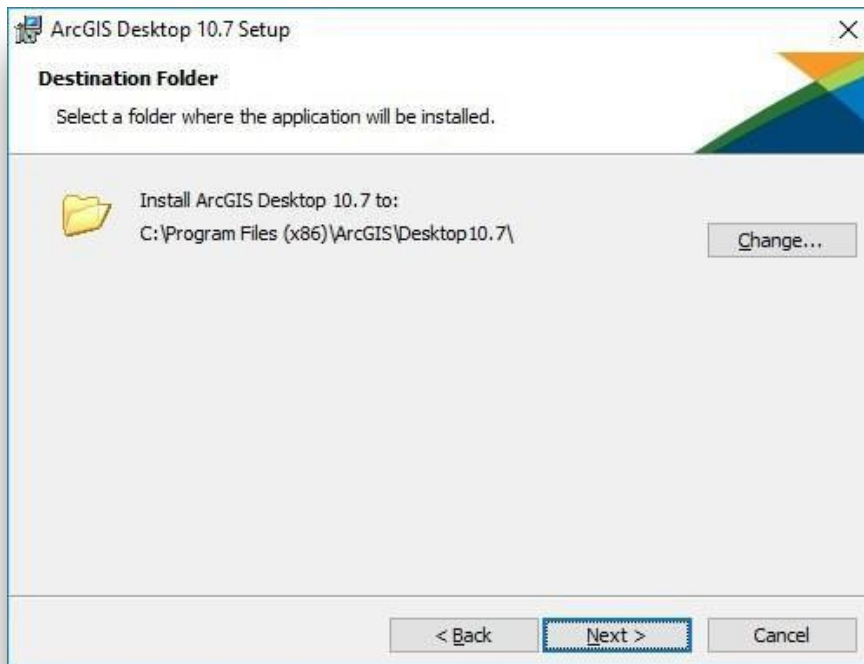


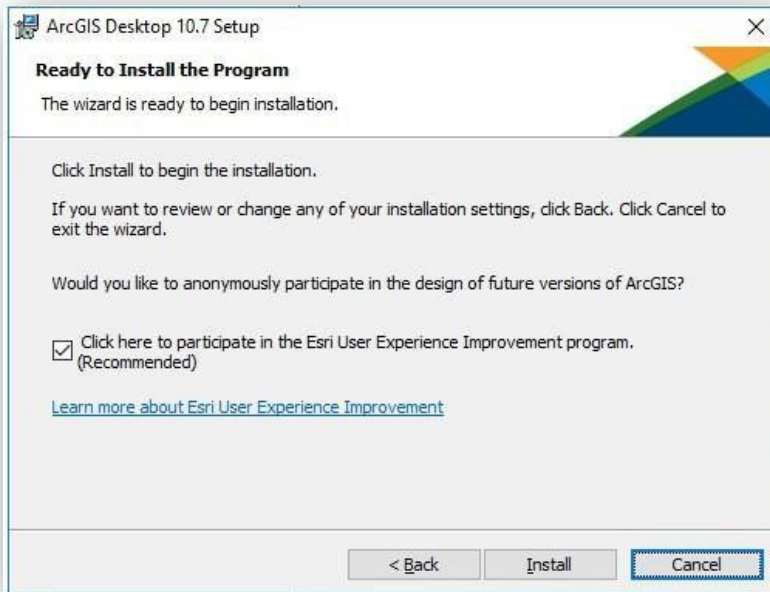
3.2. When asked to choose the installation type, choose [Complete](#) and click [Next](#).



3.4. Click [Next](#).

3.5. Click [Install](#).





3.6. Let the installer run and then you will see this window, click [Finish](#)

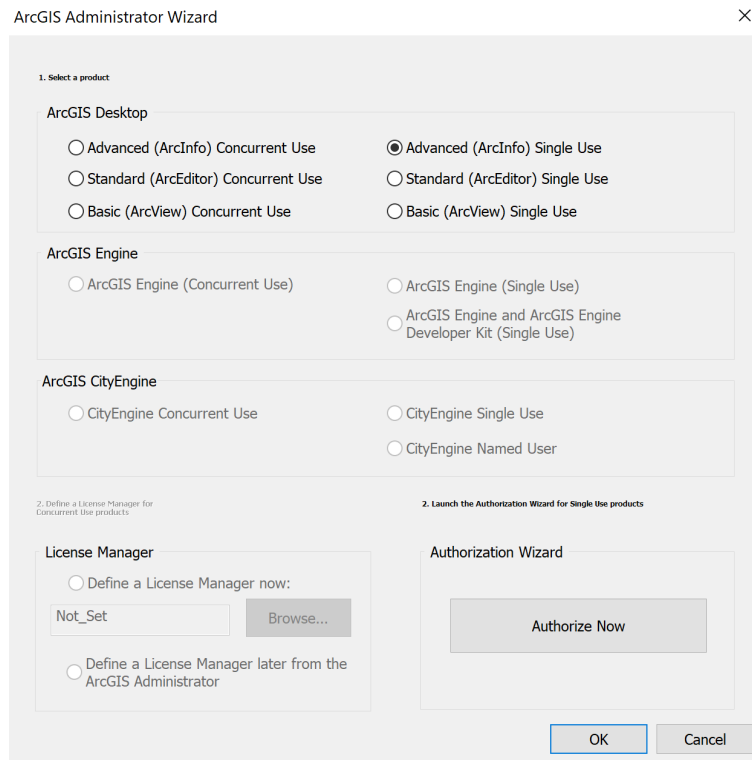


4. Authorizing your software (for Single Use license)

If the authorization window doesn't come automatically, then go to Start -> All Programs -> ArcGIS -> ArcGIS Administrator -> Click on Desktop (on the left panel)
OR

If it comes automatically then you will see the window in the screenshot below.

4.1. Select [Advanced \(ArcInfo\) Single Use](#). Click on [Authorize Now](#).



4.2. Select the appropriate option. You will see the choices below:

- **I have installed my software and need to authorize it.**

If you received an [authorization code](#), select this option to proceed with the authorization process by entering the authorization code you received from Esri Customer Service.

- **I have already authorized the software and need to authorize additional extensions.**

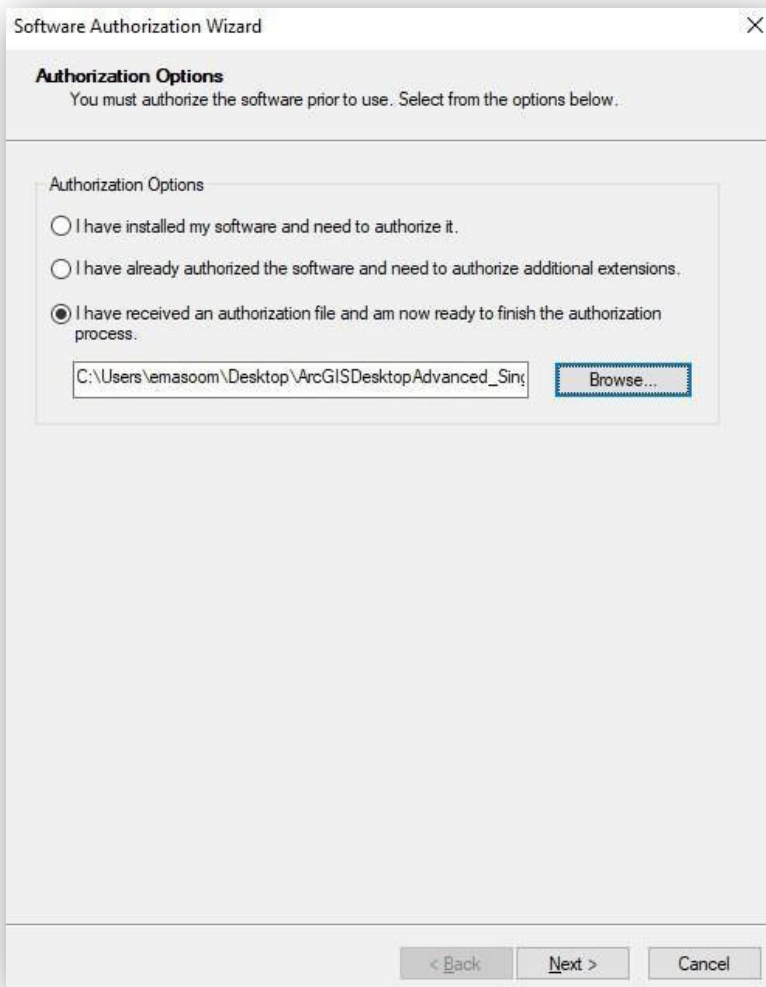
This option is used if you have already authorized the core ArcGIS for Desktop

and now want to authorize any extensions. Authorizing additional extensions acquired after authorizing core ArcGIS for Desktop can be done by starting ArcGIS Administrator from **Start > All Programs > ArcGIS**. Once in the ArcGIS Administrator utility, select the Desktop folder and select [Authorize Now](#).

- **I have received an authorization file from Esri and am now ready to finish the authorization process. ***

Select this option if you have a [provisioning file](#) created from the Esri Customer Care portal.

*At Clemson, we usually issue provisioning files. Browse to where you have stored the provisioning file and click [Next](#).



The image shows a screenshot of the "Software Authorization Wizard" dialog box. The title bar reads "Software Authorization Wizard" with a close button (X) on the right. The main area is titled "Authorization Options" and contains the instruction: "You must authorize the software prior to use. Select from the options below." Below this, there are three radio button options:

- ☐ I have installed my software and need to authorize it.
- ☐ I have already authorized the software and need to authorize additional extensions.
- ☒ I have received an authorization file and am now ready to finish the authorization process.

Below the third option, there is a text box containing the file path: "C:\Users\emasoom\Desktop\ArcGISDesktopAdvanced_Sing". To the right of the text box is a "Browse..." button. At the bottom of the dialog box, there are three buttons: "< Back", "Next >", and "Cancel".

- 4.3. In Authorization Method window select [Authorize with Esri now using the Internet](#). Click [Next](#). In Authorization Information, click [Next](#). You do not need to enter your information here. This part is already populated for you.

Software Authorization Wizard

Authorization Method
Select the method you want to use to authorize the software.

☒ Authorize with Esri now using the Internet.
(This automatic method is the easiest way to authorize. It requires an Internet connection.)

☐ Authorize at Esri's website or by email to receive your authorization file.

☐ Authorize your software from a local license server.

< Back **Next >** Cancel

Software Authorization Wizard

Authorization Information
We will use the following information to verify our records and authorize your use of the software. (* required field)

*First Name: Ellie

*Last Name: Masoomkhah

*Organization: Clemson University

Department: CcIt IT Contracts & Licensing

*Address 1: 116 Sigma Dr 412 Cooper Library

Address 2:

*City: Clemson

*State/Province: SC

*Zip/Postal Code: 29634

*Location: United States

*Phone Number: 8646501993

*Email: emasoom@clemson.edu

Comment: For Ellie Masoomkhah
Optional user-defined authorization description.

< Back **Next >** Cancel

- 4.4. In [Authorization Information \(continued\)](#) window, enter your information and click on [Next](#). In [Software Authorization Number](#) window click [Next](#).

The image shows two side-by-side screenshots of the 'Software Authorization Wizard' dialog boxes.

Left Window: Authorization information (continued)
This window prompts the user to provide organizational information. It includes three dropdown menus: 'Your Organization:' (set to 'Education-Staff/Faculty'), 'Your Industry:' (set to 'GIS Services'), and 'Yourself:' (set to 'GIS Manager/Supervisor'). A note states: 'The personal information you supplied is protected under Esri's privacy policy. If you want to view Esri's privacy policy, click the View button below.' A 'View...' button is located below the note. At the bottom are '< Back', 'Next >', and 'Cancel' buttons.

Right Window: Software Authorization Number
This window prompts the user to enter the authorization number. It includes a text box containing 'ESU239624912'. A note above the text box states: 'The authorization number consists of three letters and a series of numbers; similar to ABC123456789.' At the bottom are '< Back', 'Next >', and 'Cancel' buttons.

- 4.5. In [Authorize Software Extensions](#) window under the [Software Extensions](#) window under [Options](#) click [I do not want to authorize any extensions at this time](#) and click [Next](#). Once the software finishes authorizing, click [Finish](#).

Software Authorization Wizard

Authorize Software Extensions
Please select an option below.

Options

☒ I do not want to authorize any extensions at this time.

☐ I have authorization number(s) to authorize one or more extensions.

Extensions

Feature	Authorization Number
3D Analyst	
Spatial Analyst	
Network Analyst	
Publisher	
Data Interoperability	
Geostatistical Analyst	
Tracking Analyst	
Schematics	
Full Motion Video	
Workflow Manager	
Data Reviewer	
Business Analyst Premium	ESU099371329
LocateXT	ESU328409054

< Back Next > Cancel

Congratulations! You can now begin using your ArcGIS software! Get to work, start a new project, or just click around and explore. The more you familiarize yourself with this software, the more of an asset you will become.