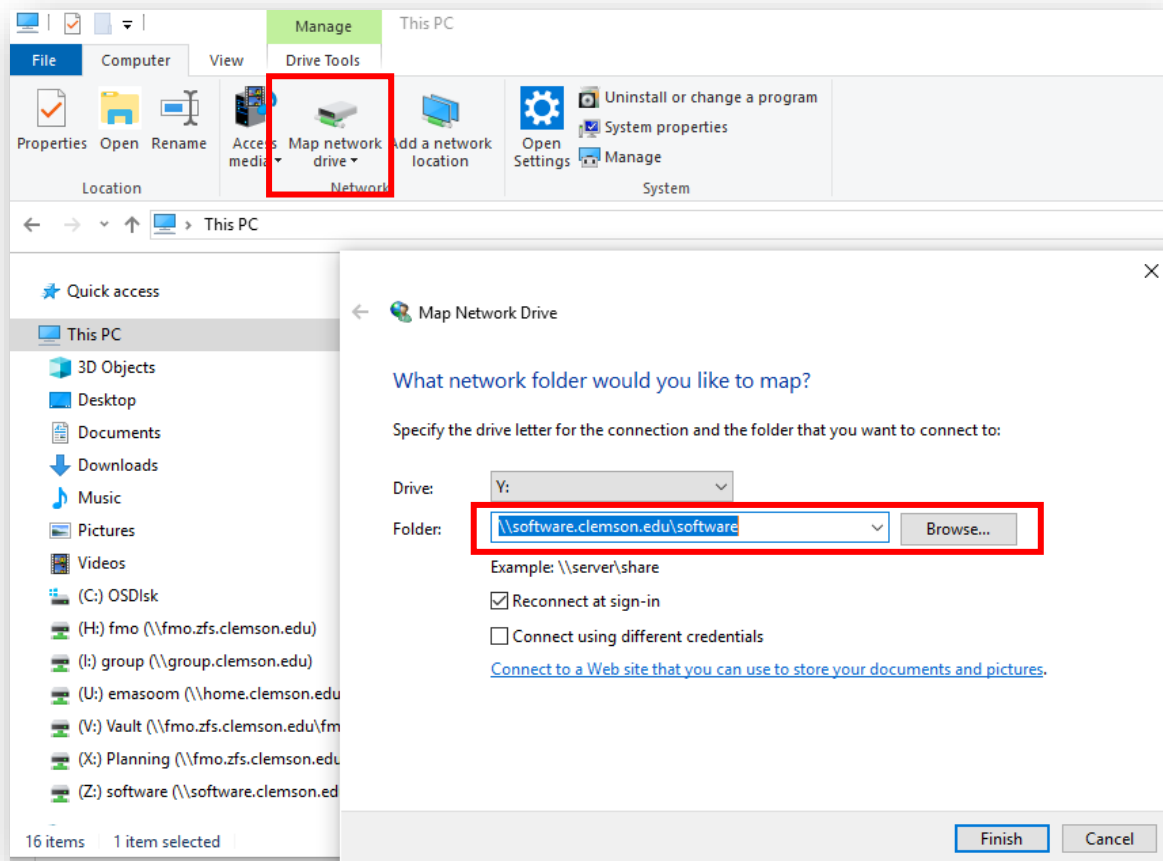


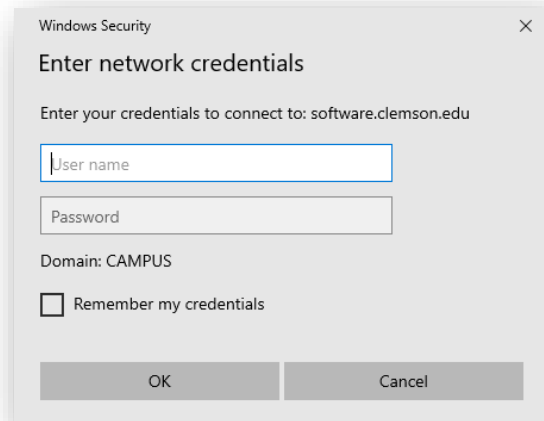
Getting the Software and Installing Esri CityEngine 20XX

1. Connecting to the Software Drive

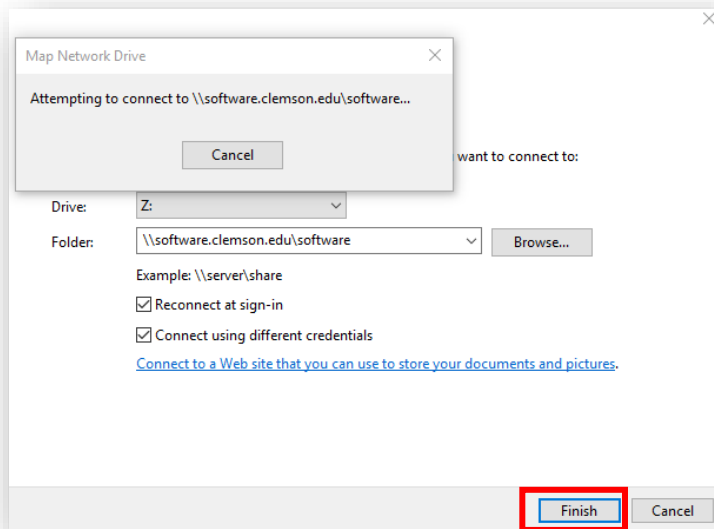
- 1.1. In order to get the installation software for Esri CityEngine, you need to be connected to the Clemson campus network.
- 1.2. Once you are connected to Eduroam, open your file explorer and click on computer in the menu on the left.
- 1.3. After clicking on computer, click [Map Network Drive](#).
- 1.4. In the blank space that says folder to the left of it, type `\\software.clemson.edu\software`. The letter chosen in the Drive dropdown menu is arbitrary.
- 1.5. Click [Finish](#).



1.6. You will be prompted to enter a password. In the **Enter network credential** dialogue box, enter your Clemson userID and password. Click **OK**.



If necessary, click **Finish**.

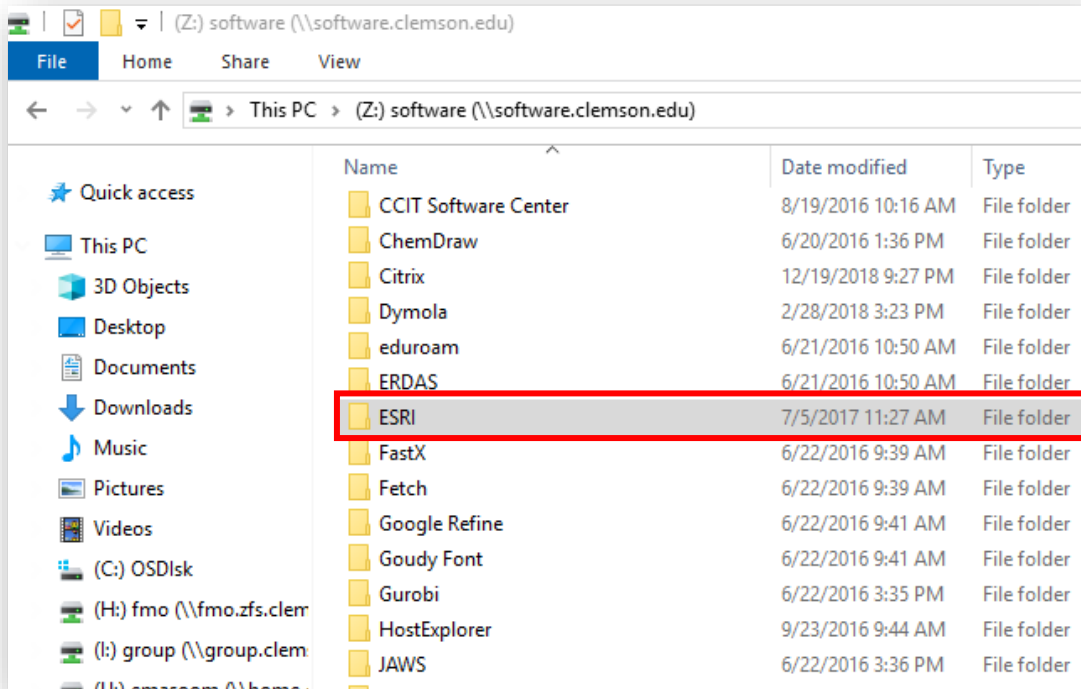


1.7. After connecting to the network drive, it should display in your computer window next to your (C:) Drive. It will be labeled *software*(\\software.clemson.edu). Double-click to open the drive.

2. Getting the Software installer

2.1. Open the Software folder.

2.2. In the Software folder, scroll until you see a folder labeled **ESRI**. Open the folder.



2.3. Open the [Windows](#) folder.

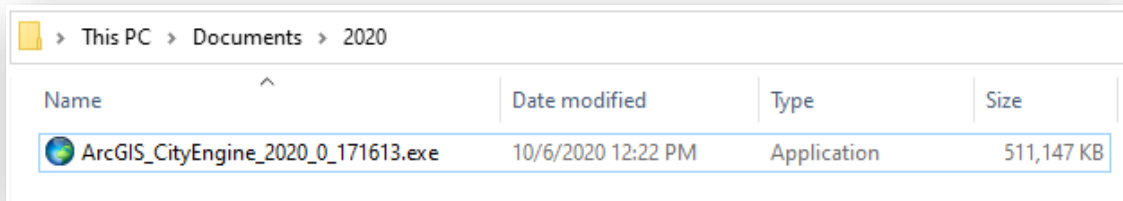
2.4. Open [ESRI_CityEngine](#).

2.5. Select the version of the software as per your need. Let's suppose we are installing [CityEngine_20XX](#). Find the folder labeled [20XX](#) and open it.

2.6. Copy the folder on your local drive.

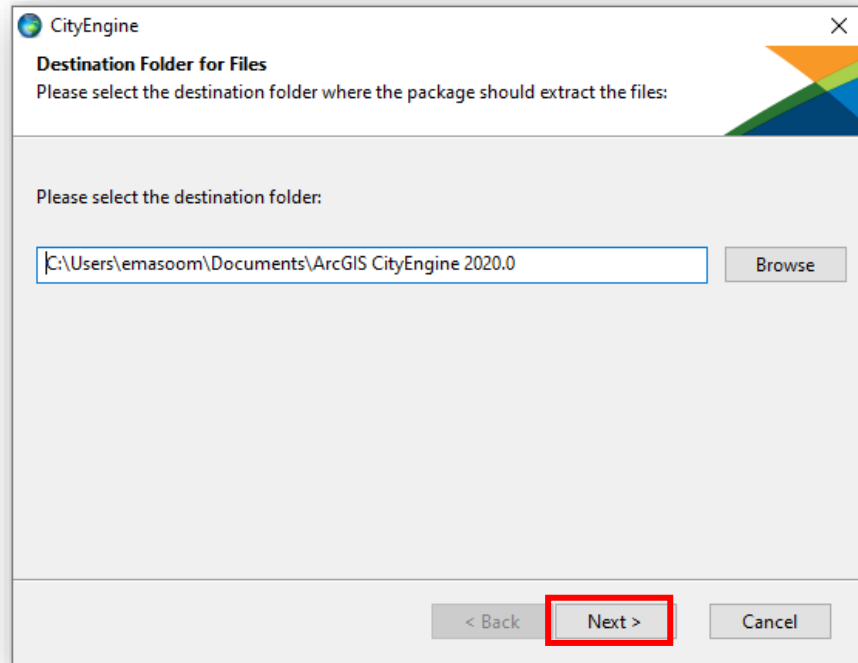
3. Installing Esri CityEngine

3.1. Double click on [ArcGIS_CityEngine_20XX.exe](#) to run the installer

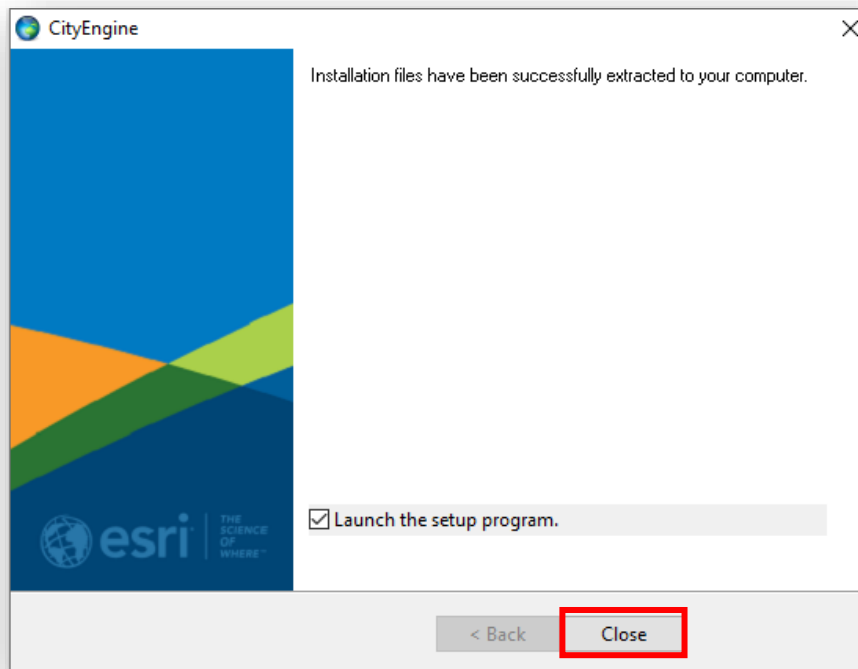


3.2. Select the folder to extract the files.

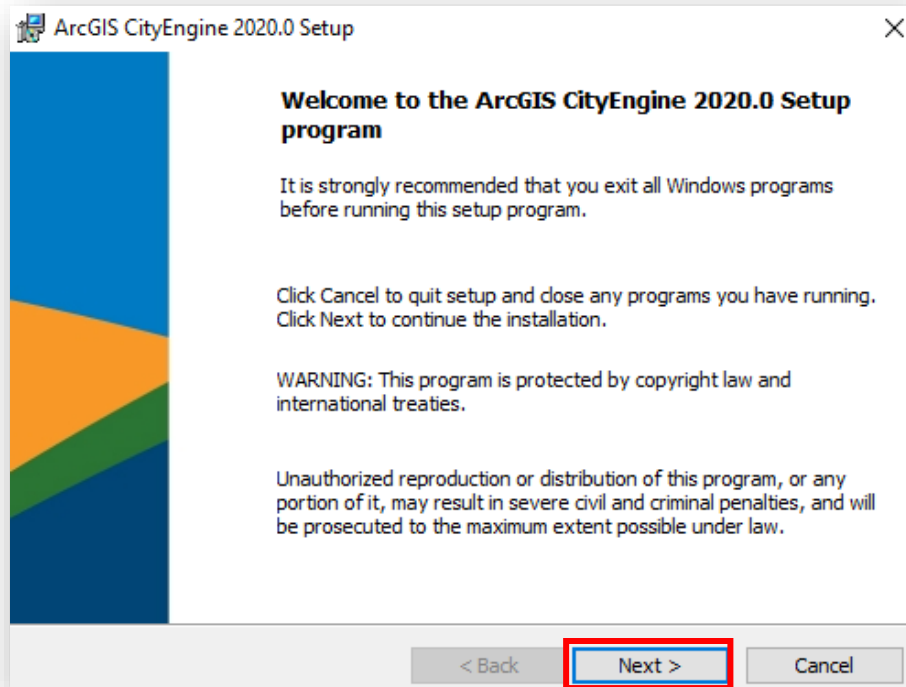




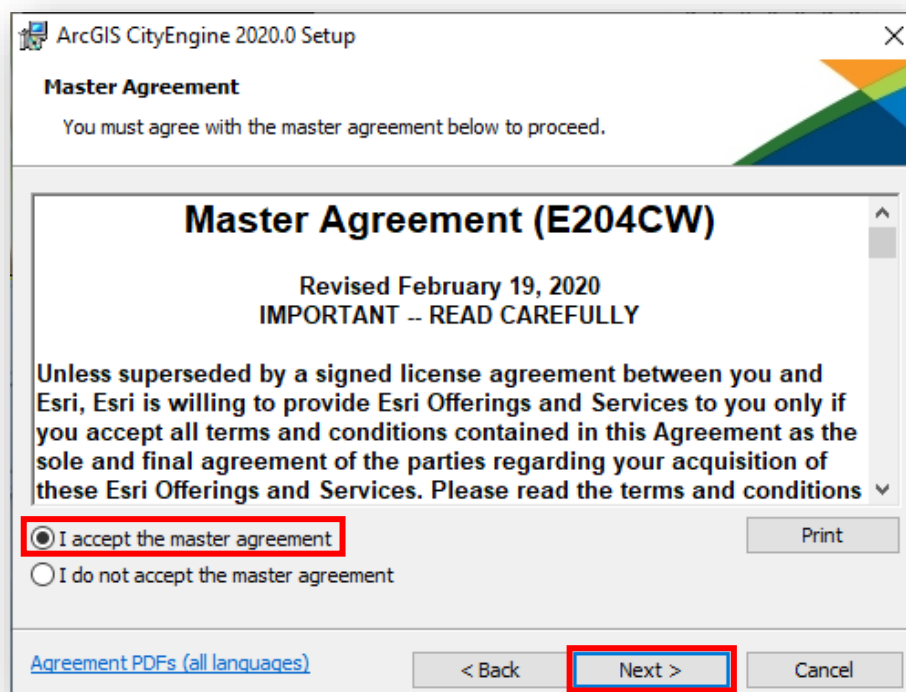
3.3. Click [Close](#) to launch the setup program.



3.4. Click [Next](#).

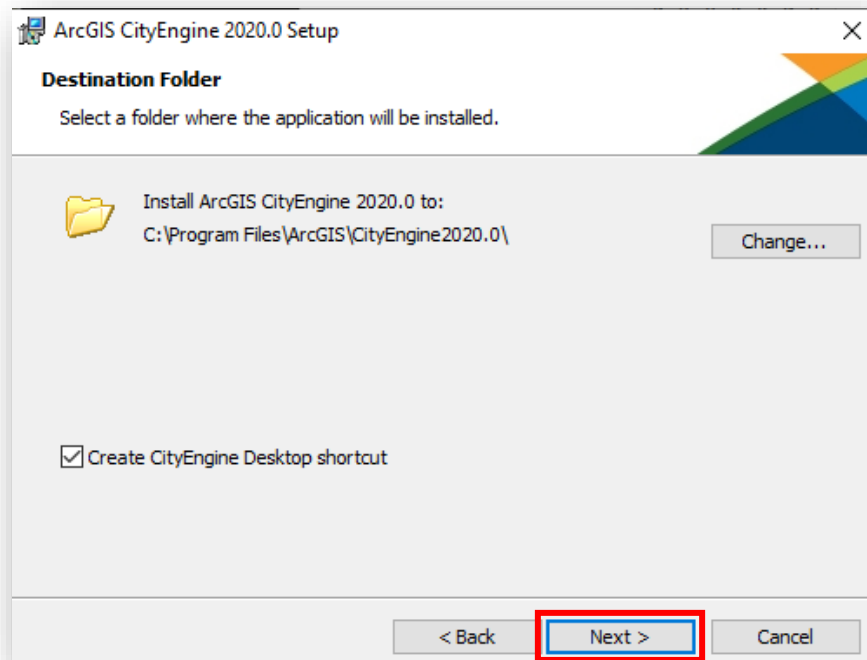


3.5. Click “I accept the master agreement” and then click [Next](#).

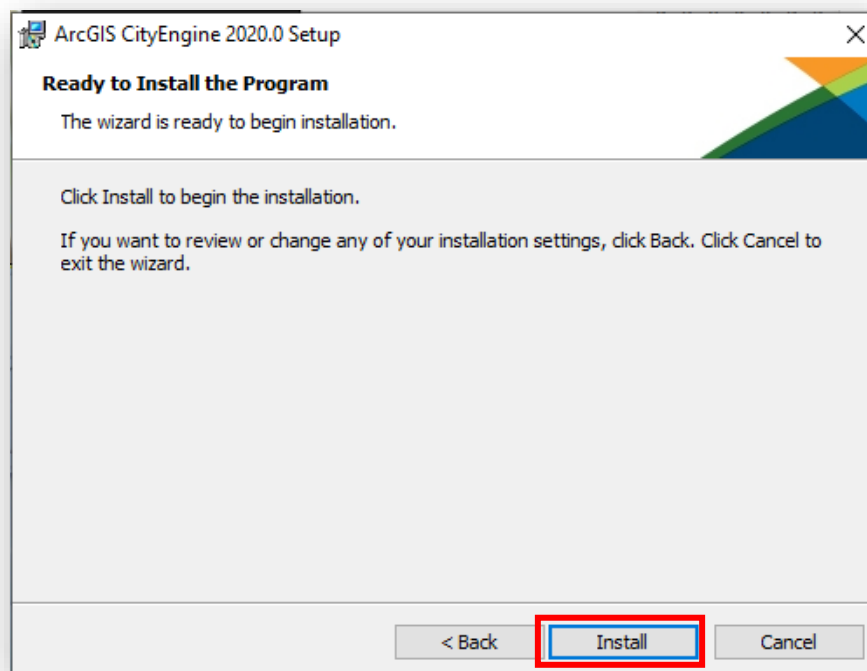


3.6. Click [Next](#).

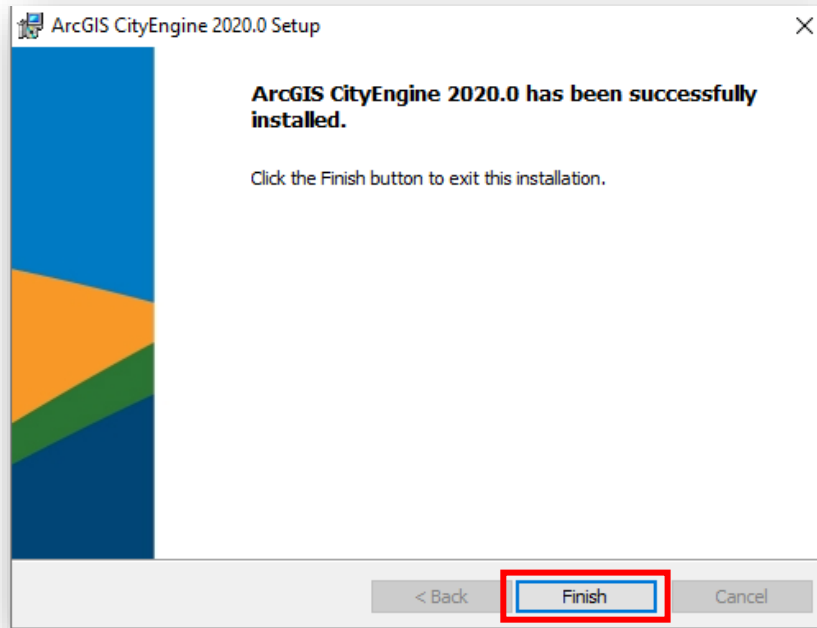




3.7. Click [Install](#).

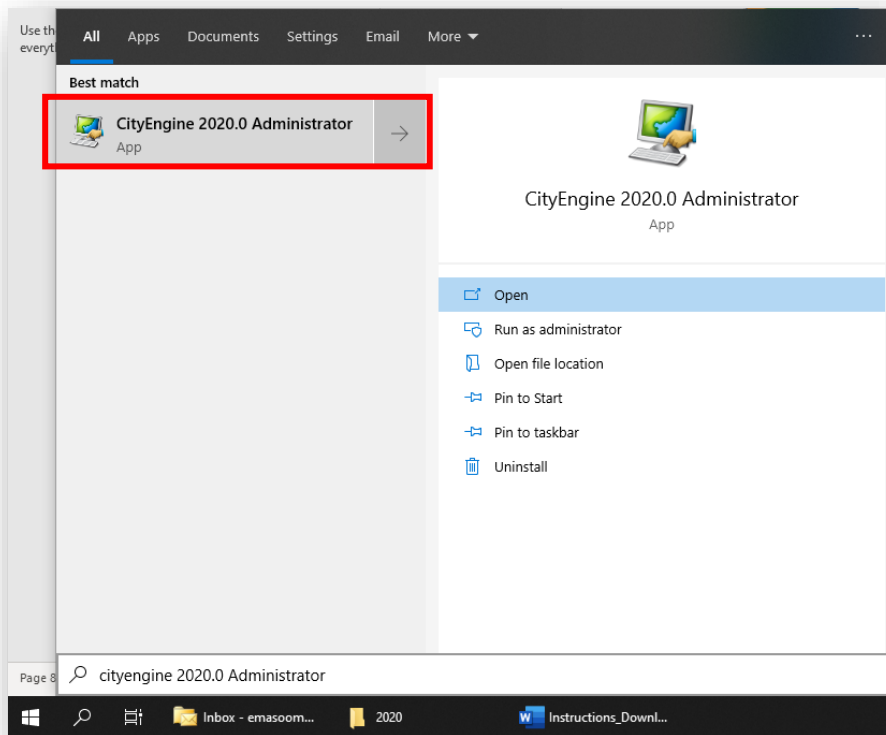


3.8. Let the green ribbon complete, then click [Finish](#).

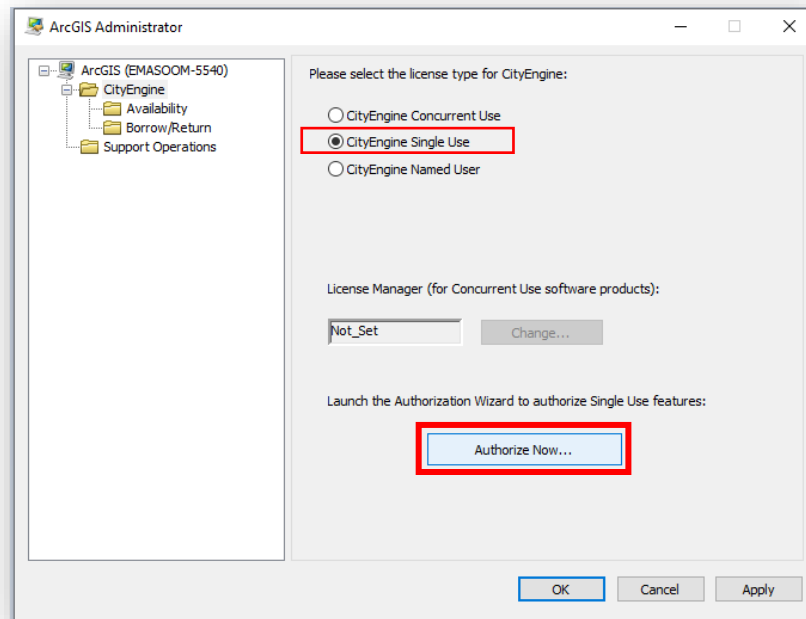


4. Authorizing Esri CityEngine

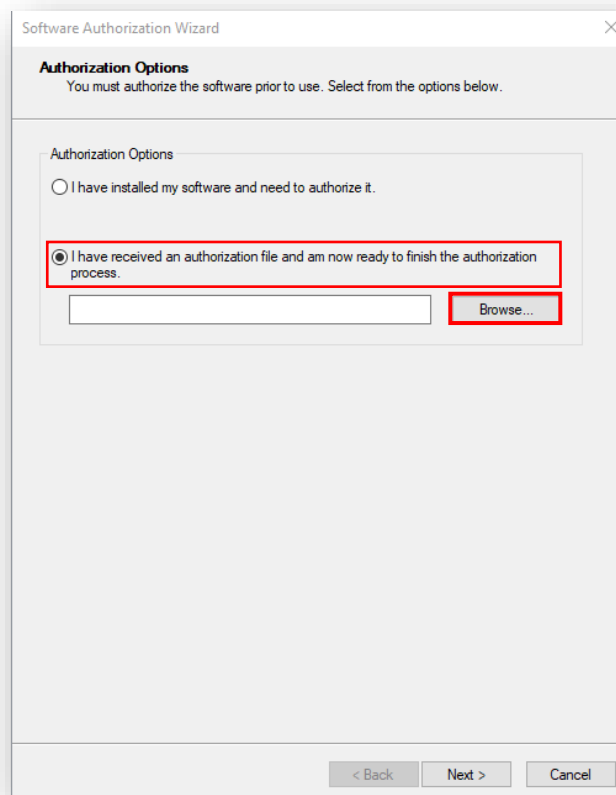
4.1. From Start Menu, open [CityEngine 2020 Administrator](#).



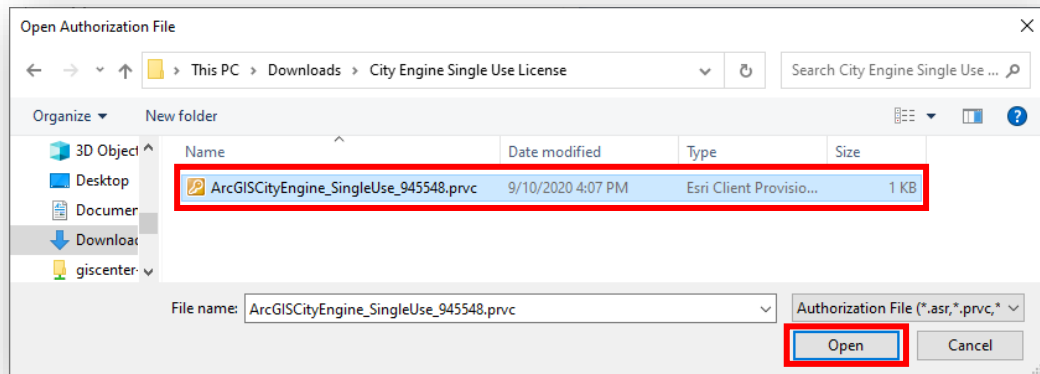
4.2. Choose **CityEngine Single Use** for license type, then click on **Authorize Now...**



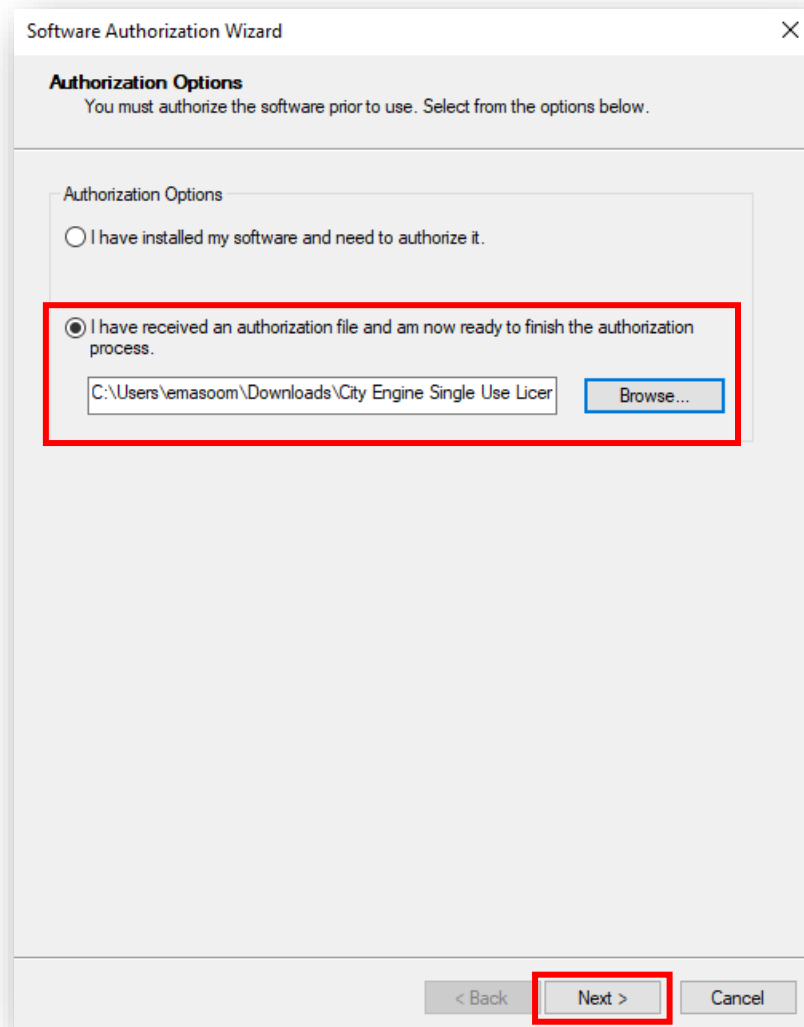
4.3. Click “I have received an authorization file and am now ready to finish the authorization process”. Click **Browse...**.



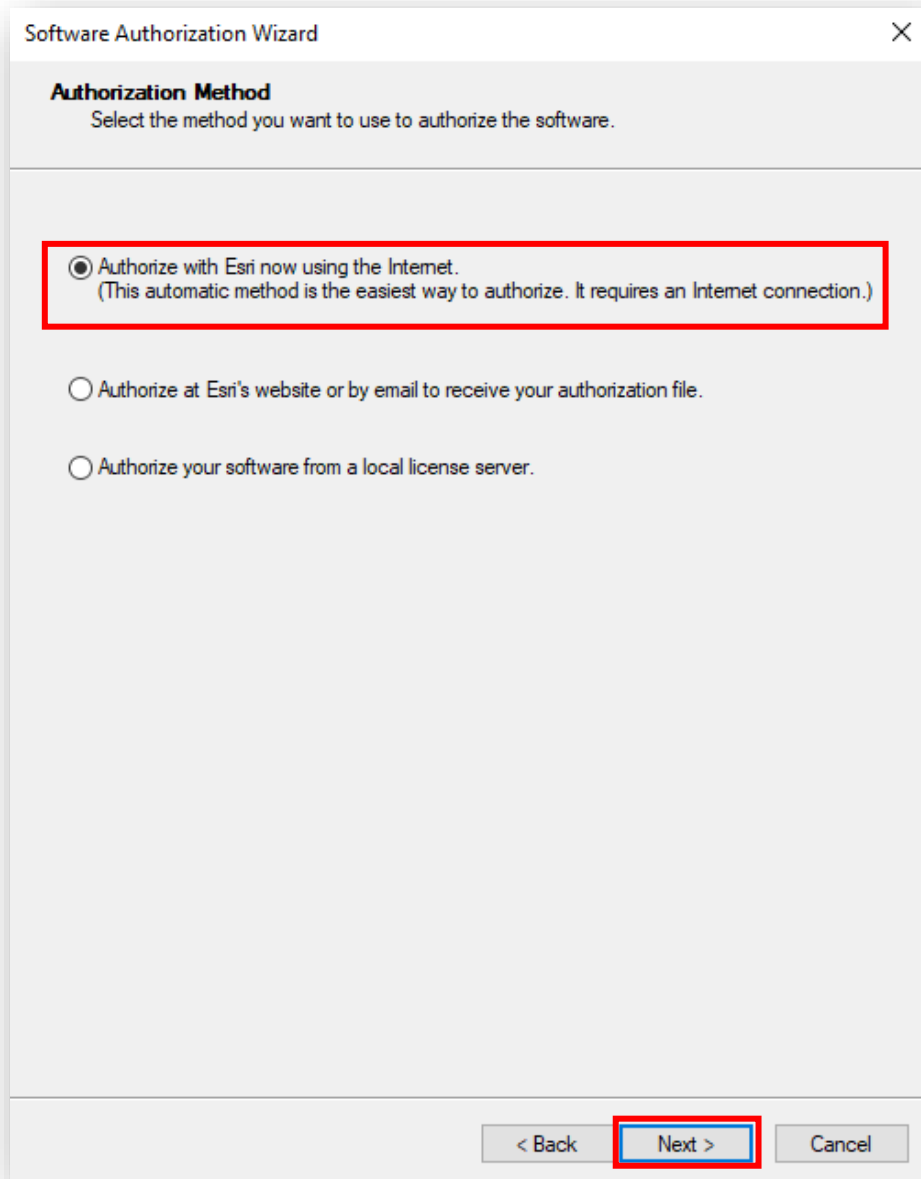
4.4. Browse to the license file you downloaded in the previous step from Box.



4.5. Click [Next](#).



4.6. Click [Authorize with Esri now using the Internet](#), then click [Next](#).



4.7. Leave the [Authorization Information](#) as is, and click [Next](#).

Software Authorization Wizard

Authorization Information
We will use the following information to verify our records and authorize your use of the software. (* required field)

*First Name:	<input type="text" value="Elie"/>
*Last Name:	<input type="text" value="Masoomkhah"/>
*Organization:	<input type="text" value="Clemson University"/>
Department:	<input type="text" value="Ccit IT Contracts & Licensing"/>
*Address 1:	<input type="text" value="116 Sigma Dr 412 Cooper Library"/>
Address 2:	<input type="text"/>
*City:	<input type="text" value="Clemson"/>
*State/Province:	<input type="text" value="SC"/>
*Zip/Postal Code:	<input type="text" value="29634"/>
*Location:	<input type="text" value="United States"/>
*Phone Number:	<input type="text" value="8646501993"/>
*Email:	<input type="text" value="emasoom@clermson.edu"/>
Comment:	<input type="text"/>

Optional user-defined authorization description.

< Back **Next >** Cancel



4.8. Fill the following fields: [Your Organization](#), [Your Industry](#), and [Yourself](#), and then click [Next](#).

Software Authorization Wizard

Authorization information (continued)
We will use the following information to verify our records and authorize your use of the software. (* required field)

*Your Organization: Education-Staff/Faculty

*Your Industry: Higher Education

*Yourself: GIS Manager/Supervisor

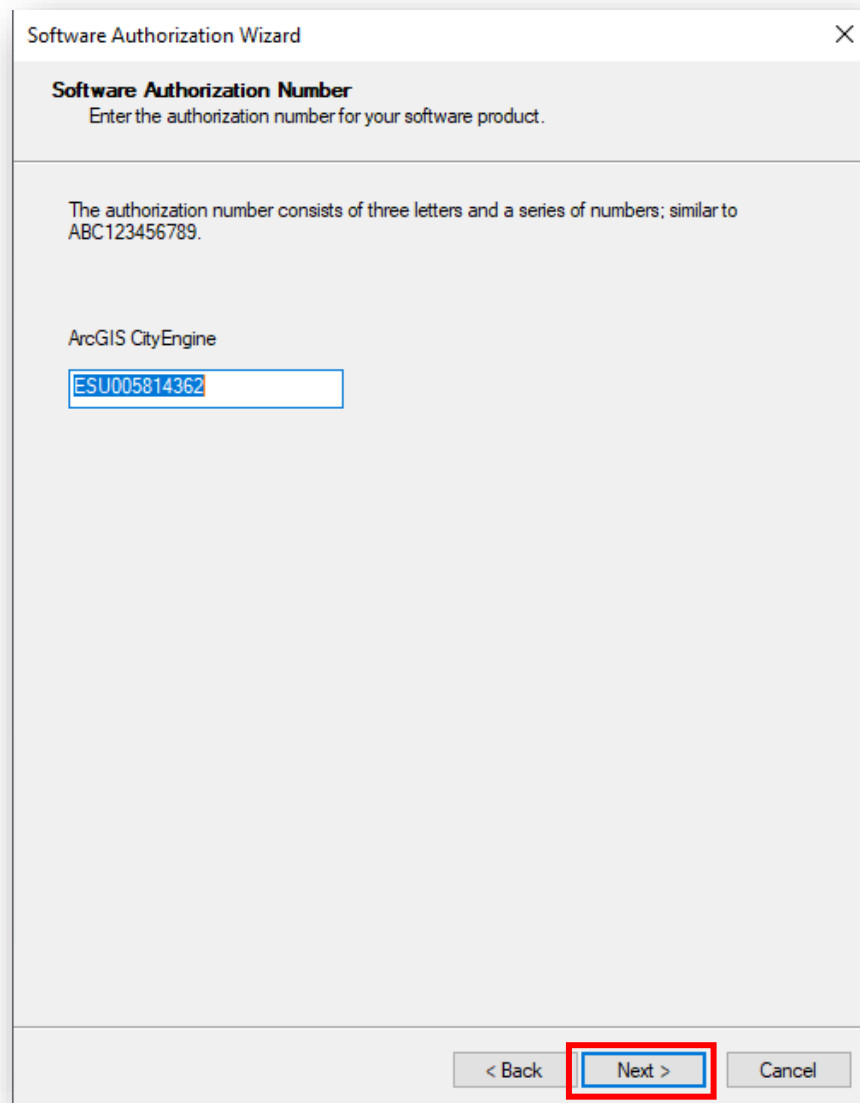
The personal information you supplied is protected under Esri's privacy policy. If you want to view Esri's privacy policy, click the View button below.

View...

< Back Next > Cancel



4.9. Click [Next](#).



Software Authorization Wizard

Software Authorization Number
Enter the authorization number for your software product.

The authorization number consists of three letters and a series of numbers; similar to ABC123456789.

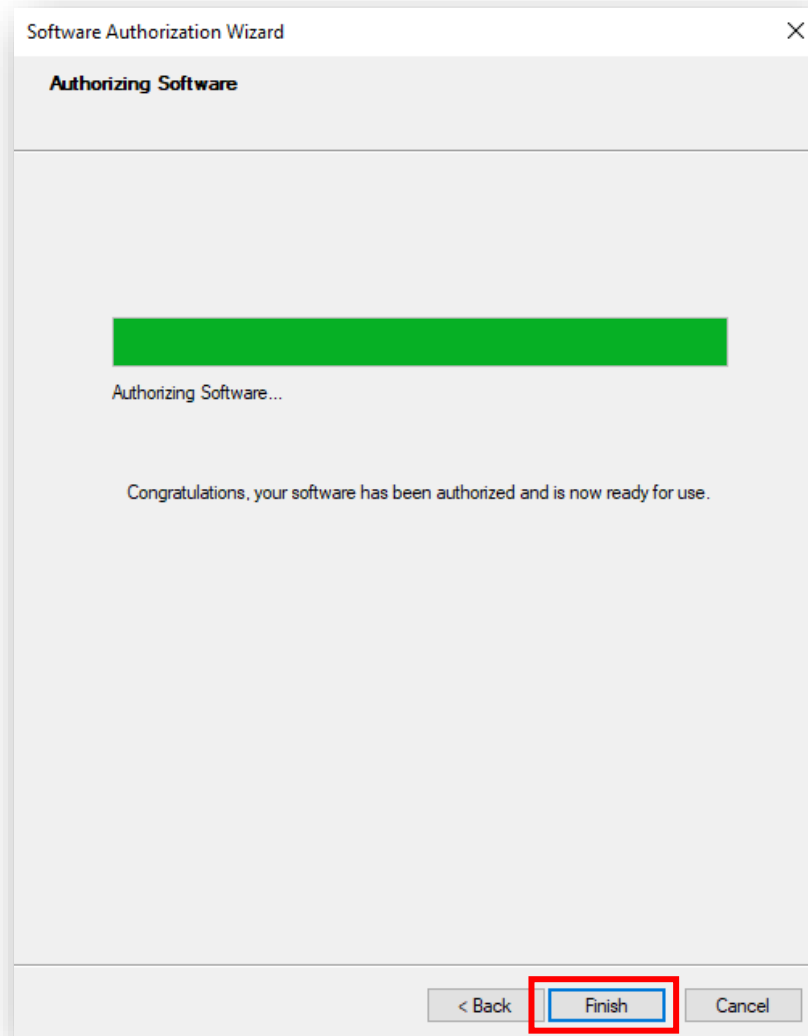
ArcGIS CityEngine

ESU005814362

< Back **Next >** Cancel



4.10. Click [Finish](#).



You can now begin using your Esri CityEngine software! 😊

