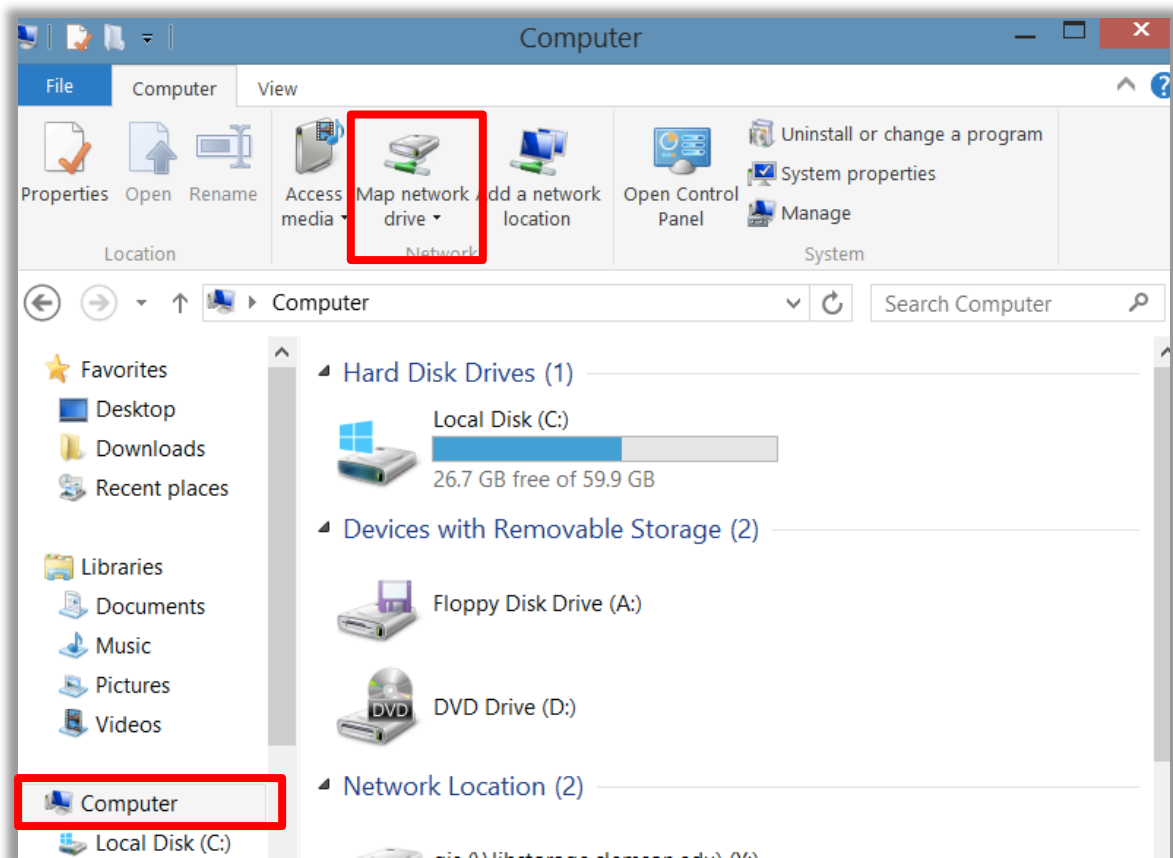


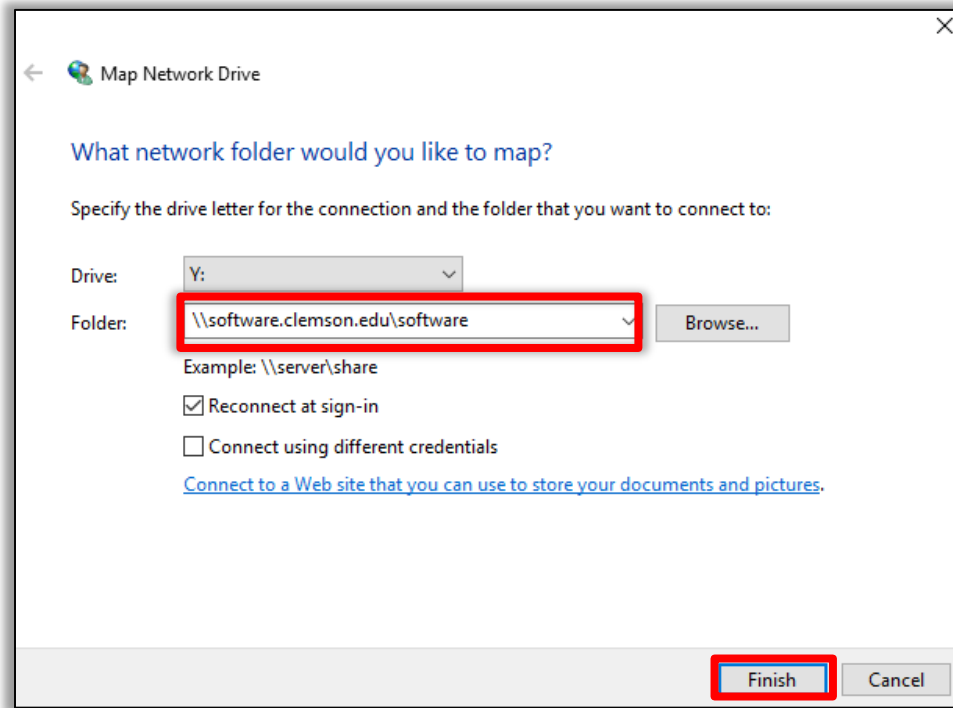
# GETTING AND INSTALLING THE EXTENSION- DESKTOP BACKGROUND GEOPROCESSING TOOLS ESRI BUSINESS ANALYST (64BIT)

## 1. Obtaining the software

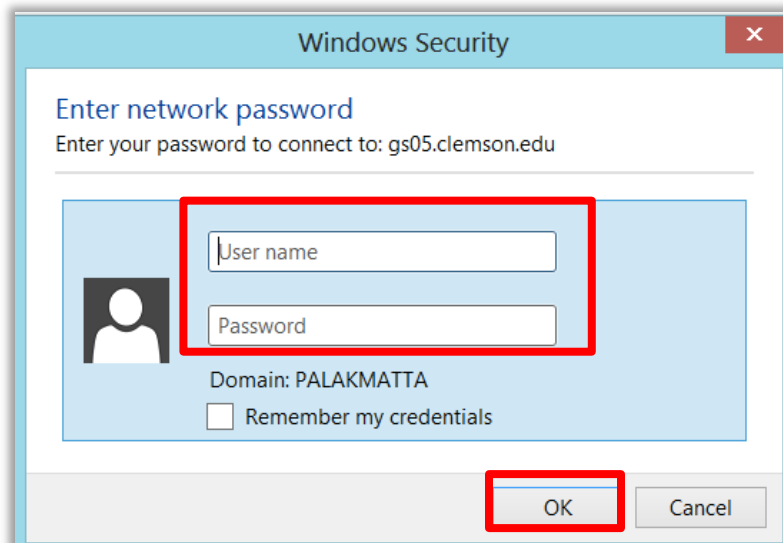
- To get the installation software for Esri Business Analyst for Desktop Background Geoprocessing , you need to get access to the network drive folder that has the software. In order to do this, you need to be connected to the Clemson campus network: EDUroam.  
If you don't know how to connect EDUroam go to link below:  
[http://www.clemson.edu/ccit/help\\_support/eduroam/documentation/index.html](http://www.clemson.edu/ccit/help_support/eduroam/documentation/index.html)
- Once you are connected to EDUroam, open Windows Explorer and click on **Computer** in the menu on the left.
- On the top bar menu, click **Map Network Drive**.



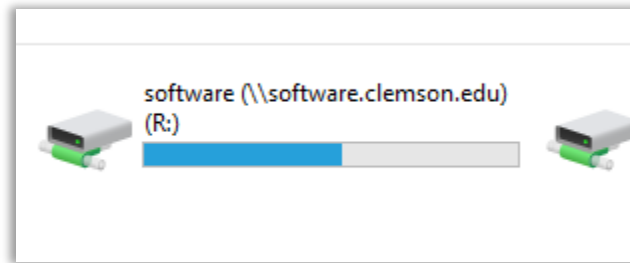
- In the dropdown box next to Folder, type `\\software.clemson.edu\software`. The letter chosen in the Drive dropdown menu is arbitrary. You can leave whichever your computer chooses.
- Click Finish.



- You will be prompted to enter a password. In the Enter Network Password dialog box; [enter your Clemson UserID and password.](#)

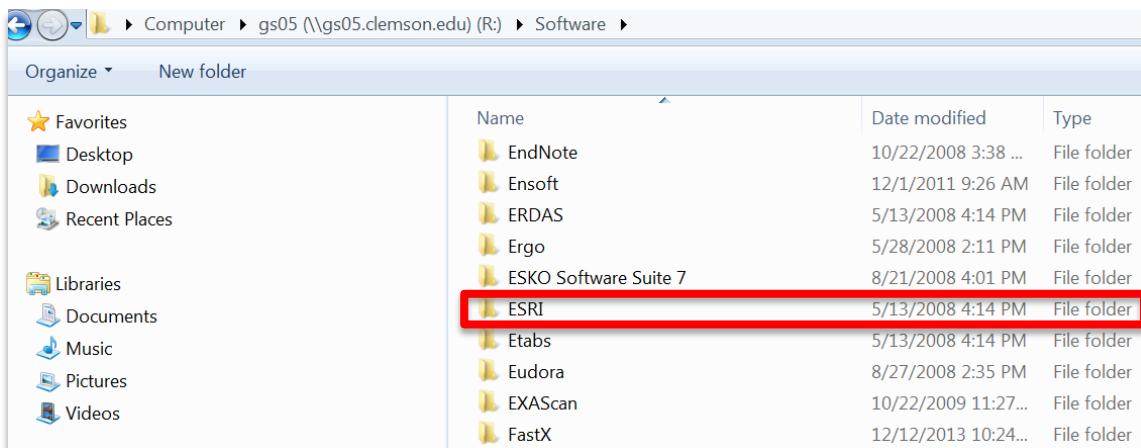


- After connecting to the network drive, it should display in your computer window next to your (C:) Drive. It will be labeled 'software' ([\\software.clemson.edu](http://\\software.clemson.edu)). Double-click to open the drive.

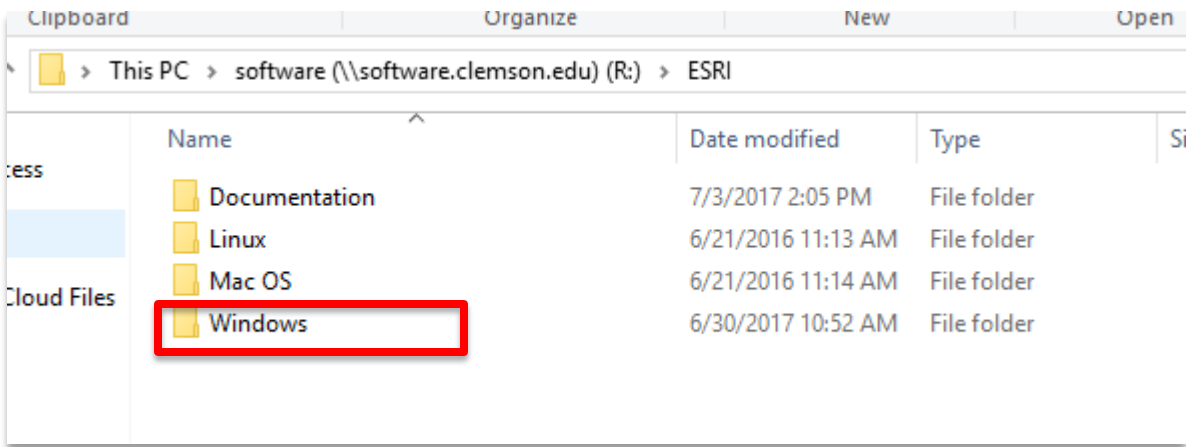


## 2. Getting the Software installer

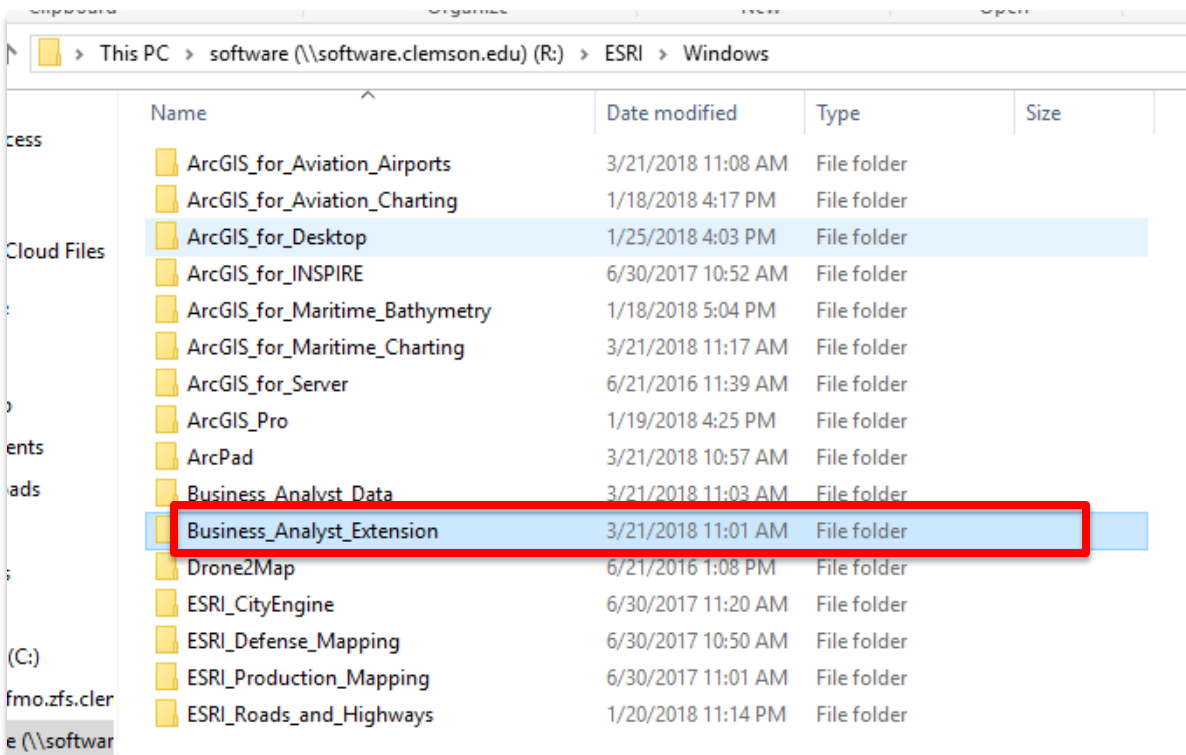
- Open the [Software](#) folder.
- In the Software folder, scroll until you see a folder labeled [ESRI](#). Open the folder.



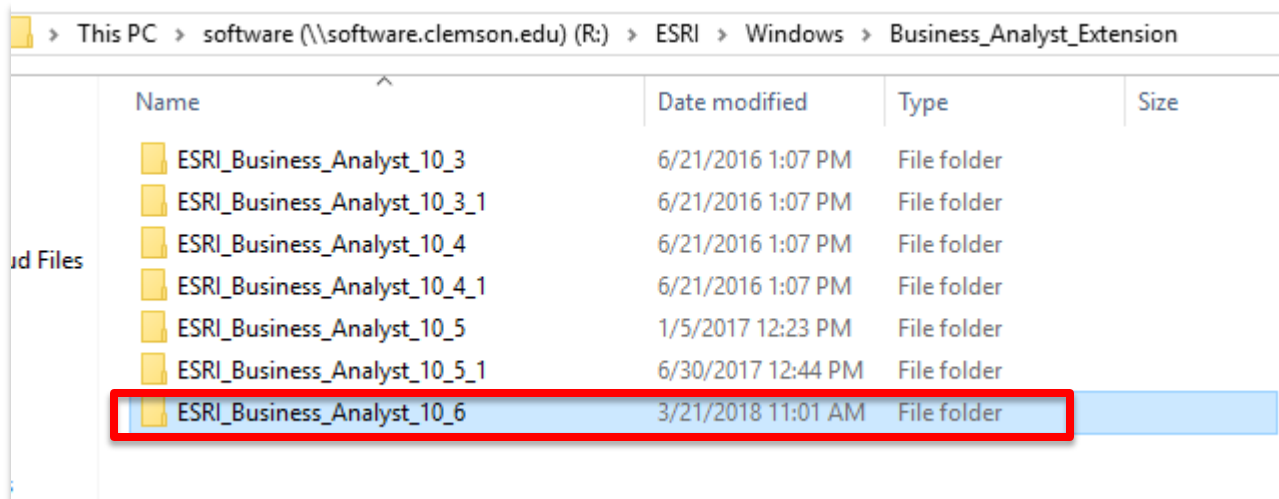
- Open the [Windows](#) folder.



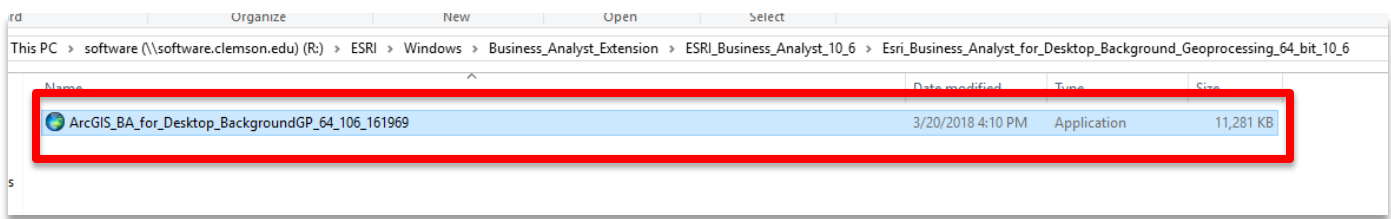
- Open [Business\\_Analyst\\_Extension](#).



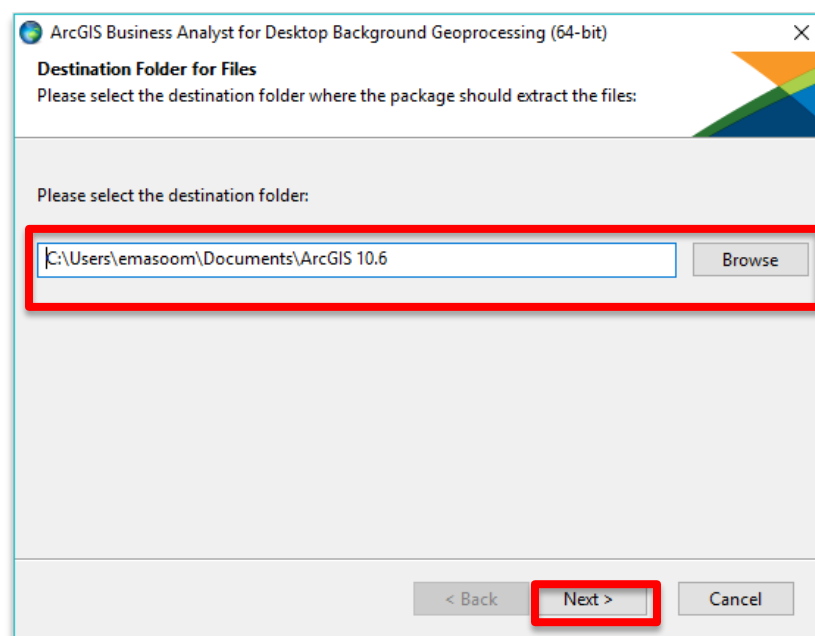
- Double Click on the version you want to install [ESRI\\_Business\\_Analyst\\_10\\_6](#).



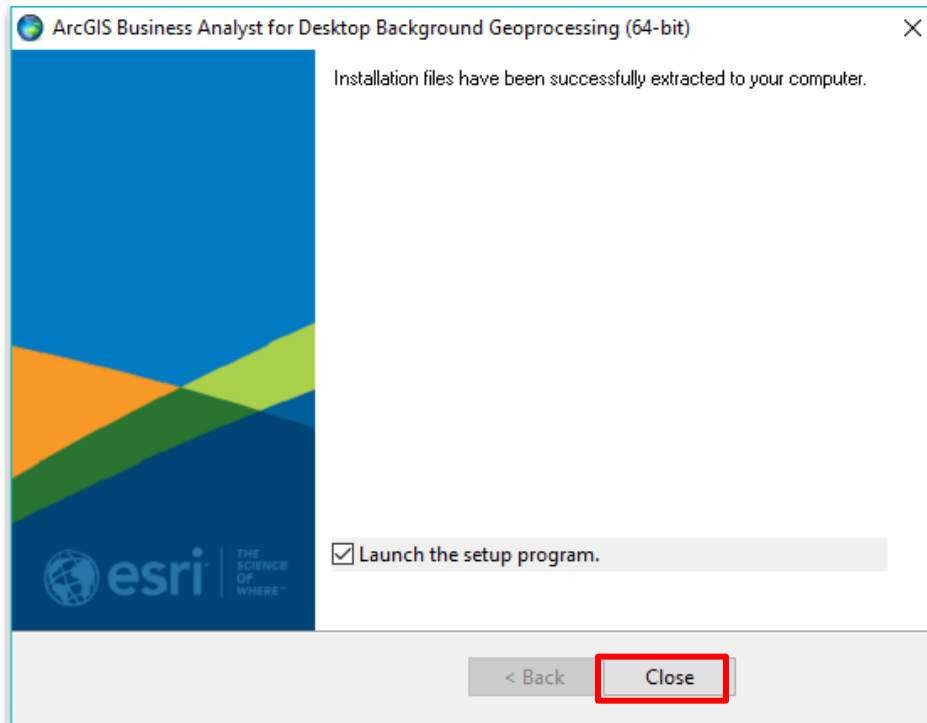
- Double click on [ArcGIS\\_BA\\_for\\_Desktop\\_BackgroundGP\\_64\\_106\\_161969](#) to run the installer.



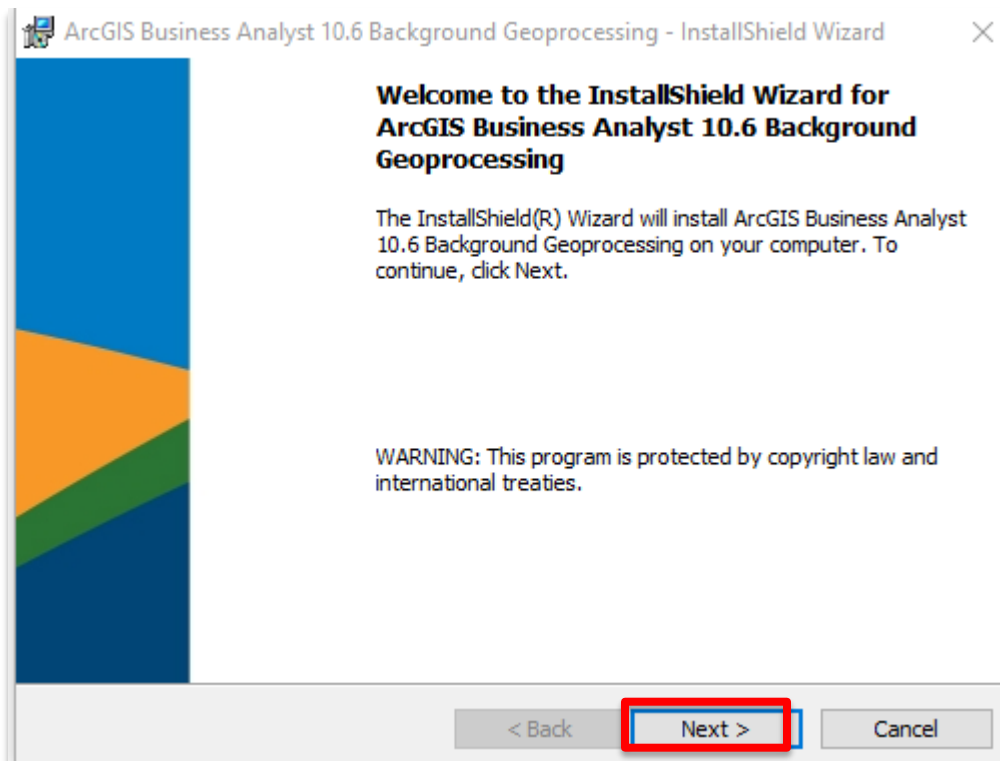
- Click [Run](#).
- The destination should already be set for you. If you wish to change the destination folder click [Browse](#). Otherwise Click [Next](#).



- After the files have been extracted, you will see the Windows Installer and let it run.
- After the installation files have installed successfully, Click [Close](#).

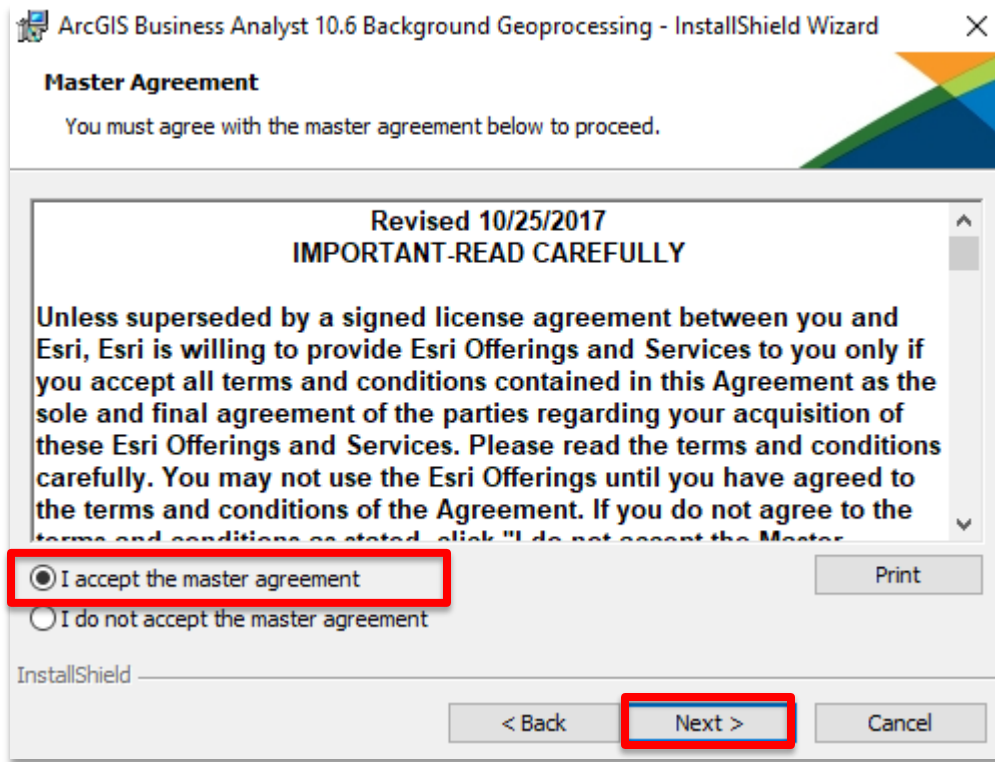


- The Esri Business Analyst 10.6 setup program should open automatically. Then Click [Next](#).

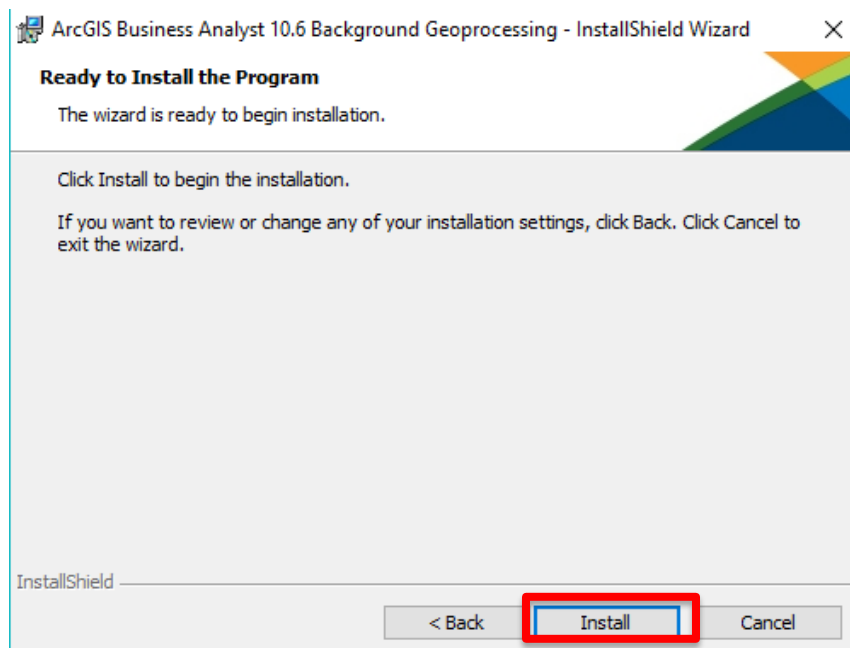


### 3. Installing Desktop Background Geoprocessing tools for Esri Business Analyst

- Now, click on [I accept the license agreement](#), and click [next](#) again.



- Click [Install](#).



- Let the installer run and then you will see this window, click [Finish](#)

